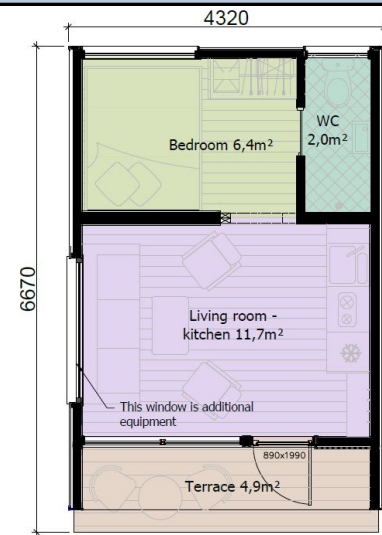
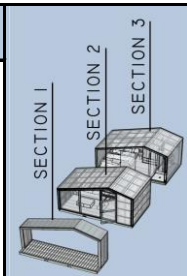


Modular House M-20 | Offer



20 m² OF COZY LIVING AREA WITH 5m² TERRACE

- ✓ DIMENSIONS DESIGNED TO FIT ON A PLATFORM
- ✓ 1 HOUSE PER ONE PLATFORM
- ✓ HALF OF THE DAY ASSEMBLY REQUIRED (2 PEOPLE)



ITEMS		BASE	ADDITIONAL OPTIONAL CHOICES
Timber Frame Box with finished external and internal layers (Walls, roof, Floor)		✓	
Electrical instalation		✓	
Plumbing instalation & ventilation slots		✓	
Terrace		✓	
Windows & doors	Triple Glazed, PVC Frame	✓	
Additional window in living room *		-	500 €
Kitchen cupboards, with top, a fridge and sink with tap		-	2 000 €
WC&Shower equip., washbasin with cupboard, mirror		-	1 150 €
° #		-	950 €
Heated floor in main area		-	600 €
Heated floor in WC		-	250 €
Boiler		-	450 €
Internal and external lighting units, sockets & switches		-	490 €
Closet (to hide the boiler & clothes space)		-	420 €
Foundation. Furniture: bed, couch, table		-	-
Unloading from the trailer (Crane)		-	-
Assembly and Transport **		-	-
Price:		20 900,00 €	DEPENDS ON YOUR CHOICES ABOVE

Prices do not include import duties or VAT.

* Addition is possible only if external wall finish is chosen as wide wooden panels.

** Transportation and Assembly works are estimated separately according to the location of the site.